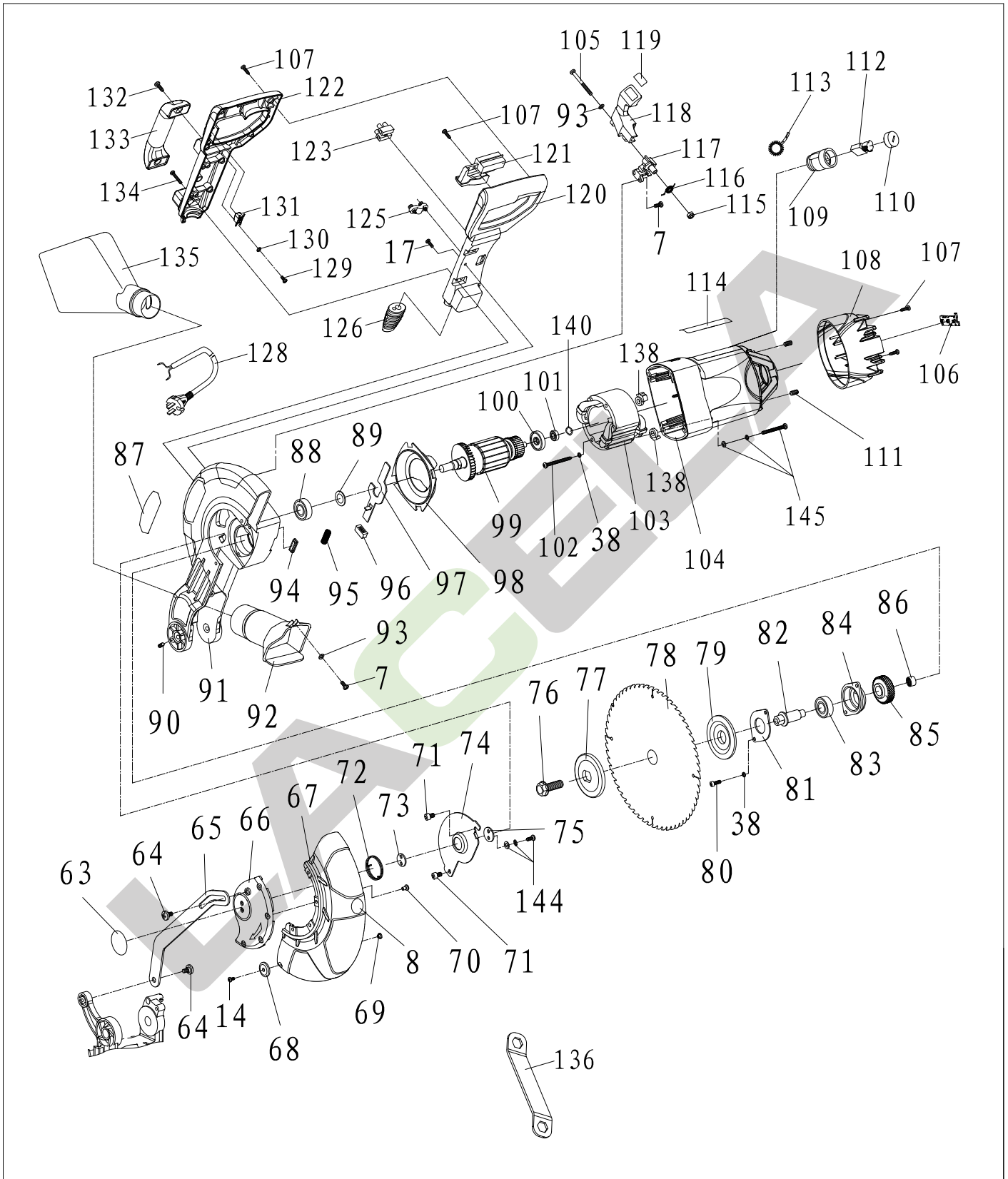


Version No.	D	Enable Time	2022.9
-------------	---	-------------	--------



Version No.	D	Enable Time	2022.9
-------------	---	-------------	--------

No.	Part Name(Chinese)	Part Name(English)	Code	Qty	No.	Part Name(Chinese)	Part Name(English)	Code	Qty
1	延伸支架锁紧旋钮	Extension Bracket Locking Knob	10101007111	2	47	切缝板	Kerf Board	10101011055	1
2	工作台底座	Base	10207004010	1	48	六角法兰面锁紧螺母M8	Screw M8	30501046	1
3	六角头螺栓M8×25	Bolt M8×25	30209027	1	49	限位块(30°)	stop block(30°)	10401003017	1
4	底座橡胶垫脚	Rubber pads for the Base	10102004046	4	50	内六角螺钉M8×40	Screw M8×40	30207064	1
5	工作台延伸支架	Table Extension Bracket	10306006027	2	51	曲臂旋转指针	Crank Rotation Pointer	10101011056	1
6	大刻度标尺	Big Scale Rod	21201003015	1	53	销轴	Pin Roll	30701012	1
7	螺钉M5×12	Screws M5×12	30201058	13	54	扭簧定位套	Torsion Spring Positioning	10101009038	2
8	警告标记	Warning Label	21002001222	3	55	扭簧	Torsion Spring	10303001058	1
9	螺钉M5×10	Screws M5×10	30201055	2	56	止动销按钮	Stop Pin Button	10101007114	1
10	工件挡板	Workpiece Baffle	10207004008	1	57	内六角螺钉M8×30	Screw M8×30	30207060	2
11	内六角螺钉M8×16	Screws M8×16	30207055	4	58	止动销复位弹簧	Stop Pin Reset Spring	10303001061	1
12	锁紧螺钉	Locking screw	30206007	1	59	弹性圆柱销2×14	Pin 2×14	30701068	1
13	锁紧扳手	Locking wrench	10101007099	1	60	止动插销	Stop Latch	30701013	1
14	螺钉M4×10	Screws M4×10	30201006	1	61	锁紧旋钮复位弹簧	Locking Knob Spring	10303001059	1
15	延伸挡板	Extension baffle	10207004012	1	62	大平垫圈5	Flat washer 5	30403055	1
16	工件压板橡胶套	Workpiece Platen Rubber Sleeve	10102004047	1	63	活动罩标贴	Cover Label	21002001220	1
17	螺钉M4×12	Screws M4×12	30201010	3	64	轴位螺钉M6×21	Screw M6×21	30206038	2
18	工件压板	Workpiece Flange	10305001045	1	65	开启连杆	Open Rod	10101007106	1
19	工件锁紧螺杆	Workpiece Locking Screw	10306005028	1	66	活动罩外盖板	Active Protectionhood Outer Cover	10208004031	1
20	工件锁紧支柱	Workpiece Locking Pillar	10306006025	1	67	活动护罩	Activities Guard	10101011050	1
21	螺纹块复位弹簧	Screw Block Spring	10303001056	1	68	开启滚轮	Open Rollar	10101011054	1
22	快速锁紧螺纹块	Quick-locking Thread Blocks	10401003016	1	69	开启轮轴	Open Axle	10301009010	1
23	工件夹紧横梁	Workpiece Clamping Beams	10207004002	1	70	螺钉M5×8	Screw M5×8	30201101	4
24	锁紧旋钮	Locking Knob	10101007107	1	71	内六角螺钉M6×12	Screw M6×12	30207034	2
26	曲臂锁紧旋钮	Crank Locking Knob	10209004009	1	72	小弹簧	Spring	10303001060	1
27	工作台锁紧螺杆	Workbench Locking Screw	10306005029	1	73	定位板	Positioning Plate	10401004019	1
28	平垫片10×20×3	Flat Washer 10×20×3	30403003	1	74	活动罩内盖板	Active Shield Cover	10401004020	1
29	六角法兰面锁紧螺母M10	Locking Nut M10	30501044	1	75	定位压板	Positioning Clamp	10305001044	1
30	塑料垫圈10×22×3	Plastic Washer 10×22×3	10101011057	1	76	六角法兰面螺栓M8×20-LH	Screw M8×20-LH	30208009	1
31	平垫圈10	Flat Washer 10	30403002	1	77	外压板	Outer Flange	10305001047	1
32	曲臂	Crank	10209004007	1	78	锯片255	Saw blade 255	21201006098	1
33	六角螺母M10	Nut M10	30501051	1	79	内压板	Inner Flange	10305001048	1
34	内六角紧定螺钉M10×40	Screw M10×40	30203001	1	80	内六角螺钉M5×16	Screw M5×16	30207015	2
36	六角螺母M8	Screw M8	30501039	4	81	轴承盖	Bearing Cap	10401002032	1
37	旋转工作台	Bench	10207004004	1	82	输出轴	Output Spindle	10301001089	1
38	弹簧垫圈5	Spring washer 5	30401011	4	83	轴承6203	Bearing 6203	30103091	1
39	定位弹簧片	Positioning spring plate	10401003014	1	84	轴承座	Bearing Seat	10207004007	1
40	工作台旋转角度指针	Table Rotation Pointer	10101011049	1	85	大齿轮	Big Gear	10302004100	1
41	弹簧片	Spring plate	10401003013	1	86	滚针轴承HK1210	Bearing HK1210	30101041	1
42	六角螺母M10	Nut M10	30501082	1	87	商标	Trademark	20402007050	1
43	工作台锁紧旋钮盖	Workbench Locking Knob Cover	10101008039	1	88	轴承6202	Bearing 6202	30103084	1
44	工作台锁紧旋钮	Workbench Locking Knob	10101007103	1	89	平垫片15×18.8×1	Flat washer 15×18.8×1	30403016	1
45	工作台标贴	Workbench Label	21002001227	1	90	内六角紧定螺钉M6×18	Screw M6×18	30203026	2
46	长扁头螺杆	Long Screw	10306005026	1	91	固定护罩	Fixed Guard	10208004030	1
Version No.		D			Enable Time		2022.9		

No.	Part Name(Chinese)	Part Name(English)	Code	Qty	No.	Part Name(Chinese)	Part Name(English)	Code	Qty
92	排尘口	Dust Port	10101005075	1	140	波形垫圈25×19	Wave washer 25×19	30402011	1
93	平垫圈5	Flat Washer 5	30403053	2	142	工作台压紧块	Workbench pressing block	10401003015	1
94	锁扣弹簧座	Catch Spring Seat	10101011058	1	143	带平弹垫螺钉M5×16	Screw M5×16	30201062	4
95	转子锁扣复位弹簧	Rotor Lock Spring	10303001062	1	144	带平弹垫螺钉M5×10	Screw M5×10	30201125	2
96	锁扣按钮	Lock Button	10101007109	1	145	带平弹垫螺钉M5×55	Screw M5×55	30201147	4
97	转子锁扣	Rotor Lock	10401008017	1	146	平垫片6.2×14×0.8	Flat washer 6.2×14×0.8	30403061	1
98	挡风圈	Air Deflector	10101005074	1	147	六角头螺栓M8×35	Bolt M8×35	30209024	2
99	转子	Armature	10502001148	1					
100	爬电挡圈	Insulation Washer	10101006010	1					
101	轴承6000	Bearing 6000	30103004	1					
102	自攻螺钉ST5×65	Screw ST5×65	30202078	2					
103	定子	Stator	10501001131	1					
104	机壳	Housing	10101001202	1					
105	螺钉M5×55	Screw M5×55	30201092	1					
107	自攻螺钉ST4×16	Screw ST4×16	30202022	9					
108	后罩	Rear Cover	10101003053	1					
109	刷握	Brush Holder	10606001103	2					
110	刷握盖	Brush Cap	10606001104	2					
111	内六角平端紧定螺钉M5×10	Screw M5×10	30203006	2					
112	碳刷	Carbon Brush	10605001080	2					
113	拉簧	Spring	10607001013	2					
114	铭牌	Nameplate	20302007184	1					
115	六角法兰面锁紧螺母M5	Screw M5	30501045	1					
116	保险扳手复位弹簧	Wrench Spring	10303001055	1					
117	保险扳手座	Wrench Seat	10101011048	1					
118	活动罩保险扳手	Wrench	10101007104	1					
119	保险扳手标贴	Wrench Label	21002001223	1					
120	手柄下箱	Lower Handle	10101004229	1					
121	开关	Switch	10601001132	1					
122	手柄上箱	Upper Handle	10101004226	1					
123	塑料接线排4	Terminal Block 4	30802009	2					
125	电缆压板	Cord Anchor	10101011123	1					
126	电缆护套	Cord Sleeve	10102001008	1					
128	电源线2×1	Cord 2×1	10602006010	1					
129	自攻螺钉3×6.5	Screw 3×6.5	30202008	2					
130	大垫圈3	Washer 3	30403091	2					
131	激光按钮	Laser Button	10101007105	1					
132	自攻螺钉ST5×16	Screw ST5×16	30202060	2					
133	提行手柄	Handle	10101004230	1					
134	螺钉M4×25	Screw M4×25	30201028	4					
135	集尘袋	Dust bag	21201010041	1					
136	锯片扳手	Blade Wrench	21201002010	1					
137	螺钉M4×8	Screw M4×8	30201052	1					
138	定子垫	Stator Pad	10101011059	2					
Version No.		D			Enable Time			2022.9	